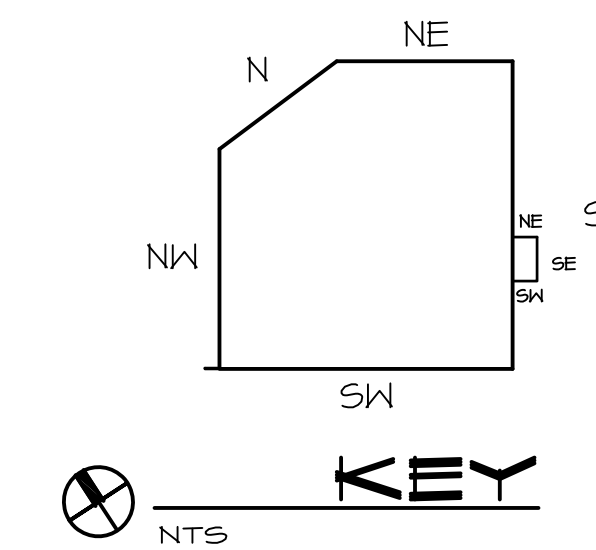


COLUMN & FOOTING SCHEDULE			
MARK	SIZE	REINFORCEMENT	FOOTING DETAIL
A	36" x 12" THICK	(4) #4 x CONTINUOUS	1/53.2
B	7'-6" x 7'-6" x 16" THICK	#5 @ 4" O.C. EACH WAY	3/52.1
C	10'-0" x 10'-0" x 18" THICK	#5 @ 5" O.C. EACH WAY	3/52.1
D	9'-0" x 9'-0" x 16" THICK	#5 @ 6" O.C. EACH WAY	3/52.1
E	5'-6" x 5'-6" x 12" THICK	#4 @ 7" O.C. EA. WAY OR #5 @ 13" O.C. EA. WAY	4/52.1
F	7'-6" x 7'-6" x 16" THICK	#5 @ 7" O.C. EACH WAY	4/52.1
G	8'-0" x 8'-0" x 18" THICK	#5 @ 7" O.C. EACH WAY	4/52.1
H	4'-6" x 4'-6" x 12" THICK	#4 @ 8" O.C. EACH WAY	4/52.1
I	3'-6" x 3'-6" x 12" THICK	#4 @ 7" O.C. EACH WAY	4/52.1
J	24" x 12" THICK	(4) #4 x CONTINUOUS	4/52.2
K	36" x 12" THICK	(4) #4 x CONTINUOUS	4/52.2
L	6'-0" x 6'-0" x 24" THICK	#5 @ 6" O.C. EACH WAY	4/53.4
M	5'-0" x 5'-0" x 24" THICK	#5 @ 6" O.C. EACH WAY	4/53.4

REVISIONS	
1	8-12-05
2	8-24-05
3	9-26-05



**NOTES**

1. COORDINATE AND VERIFY ALL DIMENSIONS WITH THE ARCHITECTURAL DRAWINGS AND FIELD VERIFICATION.

**FOUNDATION PLAN**  
1/16" = 1'-0"

CASCADE  
DESIGN GROUP, INC.  
P.O. BOX 1671, CORVALLIS, OR 97339  
TEL.: (541)753-4417 FAX: (541)753-4422

A Commercial Retail/Office Building for:  
**Englund Marine Supply, Co. Inc.**  
Port of Astoria - 95 Hamburg, Astoria OR 97103

Project No: -  
Drawn: WEB  
Checked By: -  
Date: APRIL 2005

Foundation  
Plan  
**S2.0**